

# **Appendix E. Summary of Chinese White Dolphin Monitoring Results**

## CWD Small Vessel Line-transect Survey

## Survey Effort Data

DATE	AREA	BEAU	KM SEARCHED	SEASON	VESSEL	TYPE
05-Jan-17	AW	2	4.86	WINTER	32166	3RS ET
05-Jan-17	WL	1	12.53	WINTER	32166	3RS ET
05-Jan-17	WL	2	14.38	WINTER	32166	3RS ET
05-Jan-17	SWL	2	6.01	WINTER	32166	3RS ET
06-Jan-17	SWL	1	1.30	WINTER	32166	3RS ET
06-Jan-17	SWL	2	61.20	WINTER	32166	3RS ET
06-Jan-17	SWL	3	1.80	WINTER	32166	3RS ET
09-Jan-17	NWL	1	6.90	WINTER	32166	3RS ET
09-Jan-17	NWL	2	60.46	WINTER	32166	3RS ET
09-Jan-17	NWL	3	15.64	WINTER	32166	3RS ET
10-Jan-17	NEL	2	2.10	WINTER	32166	3RS ET
10-Jan-17	NEL	3	29.22	WINTER	32166	3RS ET
10-Jan-17	NEL	4	16.68	WINTER	32166	3RS ET
12-Jan-17	NWL	2	20.09	WINTER	32166	3RS ET
12-Jan-17	NWL	3	61.01	WINTER	32166	3RS ET
12-Jan-17	NWL	4	0.70	WINTER	32166	3RS ET
13-Jan-17	SWL	2	27.52	WINTER	32166	3RS ET
13-Jan-17	SWL	3	28.90	WINTER	32166	3RS ET
13-Jan-17	SWL	4	5.33	WINTER	32166	3RS ET
19-Jan-17	AW	1	4.59	WINTER	32166	3RS ET
19-Jan-17	WL	2	7.20	WINTER	32166	3RS ET
19-Jan-17	WL	3	14.13	WINTER	32166	3RS ET
19-Jan-17	WL	4	11.03	WINTER	32166	3RS ET
19-Jan-17	SWL	3	5.88	WINTER	32166	3RS ET
19-Jan-17	SWL	4	1.00	WINTER	32166	3RS ET
20-Jan-17	NEL	2	23.30	WINTER	32166	3RS ET
20-Jan-17	NEL	3	22.00	WINTER	32166	3RS ET
20-Jan-17	NEL	4	1.60	WINTER	32166	3RS ET
06-Feb-17	AW	2	2.94	WINTER	32166	3RS ET
06-Feb-17	AW	3	1.93	WINTER	32166	3RS ET
06-Feb-17	WL	2	17.00	WINTER	32166	3RS ET
06-Feb-17	WL	3	9.79	WINTER	32166	3RS ET
06-Feb-17	WL	4	3.53	WINTER	32166	3RS ET
06-Feb-17	SWL	4	2.54	WINTER	32166	3RS ET
06-Feb-17	SWL	5	4.35	WINTER	32166	3RS ET
07-Feb-17	NEL	2	5.80	WINTER	32166	3RS ET
07-Feb-17	NEL	3	25.76	WINTER	32166	3RS ET
07-Feb-17	NEL	4	11.47	WINTER	32166	3RS ET
07-Feb-17	NEL	5	4.27	WINTER	32166	3RS ET
09-Feb-17	SWL	2	0.90	WINTER	32166	3RS ET
09-Feb-17	SWL	3	14.17	WINTER	32166	3RS ET
09-Feb-17	SWL	4	15.23	WINTER	32166	3RS ET
09-Feb-17	SWL	5	32.40	WINTER	32166	3RS ET
10-Feb-17	NEL	1	3.30	WINTER	32166	3RS ET
10-Feb-17	NEL	2	8.03	WINTER	32166	3RS ET
10-Feb-17	NEL	3	34.17	WINTER	32166	3RS ET
10-Feb-17	NEL	4	2.00	WINTER	32166	3RS ET

DATE	AREA	BEAU	KM SEARCHED	SEASON	VESSEL	TYPE
16-Feb-17	AW	1	4.73	WINTER	32166	3RS ET
16-Feb-17	WL	1	18.36	WINTER	32166	3RS ET
16-Feb-17	WL	2	3.10	WINTER	32166	3RS ET
16-Feb-17	WL	3	6.07	WINTER	32166	3RS ET
17-Feb-17	SWL	1	37.70	WINTER	32166	3RS ET
17-Feb-17	SWL	2	29.26	WINTER	32166	3RS ET
20-Feb-17	NWL	1	27.20	WINTER	32166	3RS ET
20-Feb-17	NWL	2	48.10	WINTER	32166	3RS ET
21-Feb-17	NWL	3	14.17	WINTER	32166	3RS ET
21-Feb-17	NWL	4	38.72	WINTER	32166	3RS ET
21-Feb-17	NWL	5	21.81	WINTER	32166	3RS ET
06-Mar-17	NWL	1	5.00	SPRING	32166	3RS ET
06-Mar-17	NWL	2	17.10	SPRING	32166	3RS ET
06-Mar-17	NWL	3	50.10	SPRING	32166	3RS ET
06-Mar-17	NWL	4	3.70	SPRING	32166	3RS ET
10-Mar-17	NEL	1	1.00	SPRING	32166	3RS ET
10-Mar-17	NEL	2	11.75	SPRING	32166	3RS ET
10-Mar-17	NEL	3	34.25	SPRING	32166	3RS ET
13-Mar-17	AW	2	4.72	SPRING	32166	3RS ET
13-Mar-17	WL	2	12.18	SPRING	32166	3RS ET
13-Mar-17	WL	3	20.82	SPRING	32166	3RS ET
13-Mar-17	SWL	2	12.50	SPRING	32166	3RS ET
14-Mar-17	SWL	3	22.60	SPRING	32166	3RS ET
14-Mar-17	SWL	4	18.78	SPRING	32166	3RS ET
14-Mar-17	SWL	5	16.02	SPRING	32166	3RS ET
20-Mar-17	SWL	2	36.22	SPRING	32166	3RS ET
20-Mar-17	SWL	3	26.04	SPRING	32166	3RS ET
21-Mar-17	AW	1	4.85	SPRING	32166	3RS ET
21-Mar-17	WL	1	9.95	SPRING	32166	3RS ET
21-Mar-17	WL	2	19.08	SPRING	32166	3RS ET
21-Mar-17	WL	3	2.33	SPRING	32166	3RS ET
21-Mar-17	SWL	2	0.38	SPRING	32166	3RS ET
21-Mar-17	SWL	3	6.43	SPRING	32166	3RS ET
23-Mar-17	NWL	1	32.61	SPRING	32166	3RS ET
23-Mar-17	NWL	2	43.77	SPRING	32166	3RS ET
24-Mar-17	NEL	3	27.72	SPRING	32166	3RS ET
24-Mar-17	NEL	4	18.88	SPRING	32166	3RS ET

## CWD Small Vessel Line-transect Survey

## Sighting Data







DATE	STG #	TIME	CWD/FP	GP SZ	AREA	BEAU	PSD	EFFORT	TYPE	DEC LAT	DEC LON	SEASON	BOAT ASSOC.
05-Jan-17	1	1010	CWD	9	WL	2	822	ON	3RS ET	22.2934	113.8612	WINTER	NONE
05-Jan-17	2	1051	CWD	2	WL	2	1361	ON	3RS ET	22.2738	113.8482	WINTER	NONE
05-Jan-17	3	1118	CWD	2	WL	2	118	ON	3RS ET	22.2584	113.8381	WINTER	NONE
05-Jan-17	4	1150	CWD	1	WL	2	65	ON	3RS ET	22.2413	113.8339	WINTER	NONE
05-Jan-17	5	1208	CWD	1	WL	2	86	ON	3RS ET	22.2321	113.8316	WINTER	NONE
05-Jan-17	6	1223	CWD	1	WL	1	115	ON	3RS ET	22.2248	113.8374	WINTER	NONE
05-Jan-17	7	1315	CWD	11	WL	1	84	ON	3RS ET	22.2049	113.8249	WINTER	PAIR TRAWLER
05-Jan-17	8	1347	CWD	1	WL	1	49	ON	3RS ET	22.1961	113.8317	WINTER	NONE
05-Jan-17	9	1356	CWD	1	WL	1	59	ON	3RS ET	22.1960	113.8416	WINTER	NONE
05-Jan-17	10	1436	CWD	5	SWL	2	190	ON	3RS ET	22.1726	113.8527	WINTER	PAIR TRAWLER
06-Jan-17	1	1006	CWD	2	SWL	2	N/A	OFF	3RS ET	22.1938	113.8471	WINTER	NONE
06-Jan-17	2	1453	CWD	1	SWL	1	N/A	OFF	3RS ET	22.2230	113.9451	WINTER	NONE
12-Jan-17	1	1121	CWD	5	NWL	2	260	ON	3RS ET	22.3739	113.8775	WINTER	NONE
13-Jan-17	1	1016	CWD	3	SWL	3	N/A	OFF	3RS ET	22.1948	113.8538	WINTER	NONE
13-Jan-17	2	1036	CWD	11	SWL	3	435	ON	3RS ET	22.1998	113.8688	WINTER	NONE
13-Jan-17	3	1334	CWD	2	SWL	2	41	ON	3RS ET	22.1547	113.9030	WINTER	NONE
13-Jan-17	4	1434	CWD	1	SWL	3	44	ON	3RS ET	22.1847	113.9278	WINTER	NONE
19-Jan-17	1	0926	CWD	3	AW	1	23	ON	3RS ET	22.3010	113.8864	WINTER	NONE
19-Jan-17	2	1022	CWD	1	WL	3	383	ON	3RS ET	22.2791	113.8613	WINTER	NONE
19-Jan-17	3	1107	CWD	6	WL	2	690	ON	3RS ET	22.2594	113.8430	WINTER	GILLNET
19-Jan-17	4	1131	CWD	1	WL	3	950	ON	3RS ET	22.2504	113.8413	WINTER	NONE
19-Jan-17	5	1217	CWD	2	WL	3	N/A	OFF	3RS ET	22.2234	113.8320	WINTER	NONE
19-Jan-17	6	1403	CWD	4	SWL	3	69	ON	3RS ET	22.1951	113.8587	WINTER	NONE
19-Jan-17	7	1436	CWD	2	WL	3	N/A	OFF	3RS ET	22.2198	113.8341	WINTER	NONE
19-Jan-17	8	1439	CWD	3	WL	3	N/A	OFF	3RS ET	22.2218	113.8351	WINTER	NONE
06-Feb-17	1	1013	CWD	3	WL	3	854	ON	3RS ET	22.2826	113.8613	WINTER	NONE
06-Feb-17	2	1140	CWD	3	WL	2	243	ON	3RS ET	22.2237	113.8323	WINTER	NONE
06-Feb-17	3	1218	CWD	3	WL	3	23	ON	3RS ET	22.2147	113.8300	WINTER	NONE
16-Feb-17	1	0957	CWD	2	AW	1	16	ON	3RS ET	22.2920	113.8749	WINTER	GILLNET
16-Feb-17	2	1037	CWD	5	WL	1	220	ON	3RS ET	22.2953	113.8612	WINTER	NONE
16-Feb-17	3	1121	CWD	4	WL	1	58	ON	3RS ET	22.2628	113.8564	WINTER	NONE

DATE	STG #	TIME	CWD/FP	GP SZ	AREA	BEAU	PSD	EFFORT	TYPE	DEC LAT	DEC LON	SEASON	BOAT ASSOC.
16-Feb-17	4	1147	CWD	3	WL	1	244	ON	3RS ET	22.2602	113.8470	WINTER	NONE
16-Feb-17	5	1206	CWD	2	WL	1	53	ON	3RS ET	22.2535	113.8348	WINTER	NONE
16-Feb-17	6	1215	CWD	3	WL	1	20	ON	3RS ET	22.2504	113.8378	WINTER	NONE
16-Feb-17	7	1231	CWD	7	WL	1	173	ON	3RS ET	22.2418	113.8473	WINTER	NONE
16-Feb-17	8	1304	CWD	2	WL	1	19	ON	3RS ET	22.2414	113.8428	WINTER	NONE
16-Feb-17	9	1315	CWD	2	WL	1	31	ON	3RS ET	22.2382	113.8266	WINTER	NONE
16-Feb-17	10	1333	CWD	14	WL	1	226	ON	3RS ET	22.2308	113.8381	WINTER	PURSE SEINE
16-Feb-17	11	1420	CWD	2	WL	2	452	ON	3RS ET	22.2139	113.8244	WINTER	NONE
16-Feb-17	12	1449	CWD	1	WL	2	29	ON	3RS ET	22.2051	113.8191	WINTER	NONE
17-Feb-17	1	1048	FP	2	SWL	2	174	ON	3RS ET	22.1586	113.9356	WINTER	NONE
17-Feb-17	2	1238	CWD	3	SWL	1	1380	ON	3RS ET	22.2005	113.9079	WINTER	PURSE SEINE
17-Feb-17	3	1349	CWD	2	SWL	1	50	ON	3RS ET	22.1889	113.8879	WINTER	NONE
17-Feb-17	4	1551	CWD	1	SWL	1	N/A	OFF	3RS ET	22.2009	113.8934	WINTER	NONE
17-Feb-17	5	1559	CWD	1	SWL	1	N/A	OFF	3RS ET	22.2025	113.9121	WINTER	NONE
20-Feb-17	1	1137	CWD	1	NWL	2	259	ON	3RS ET	22.3819	113.8760	WINTER	NONE
21-Feb-17	1	1137	CWD	4	NWL	3	64	ON	3RS ET	22.3866	113.8776	WINTER	NONE
13-Mar-17	1	1130	CWD	4	WL	2	374	ON	3RS ET	22.2229	113.8269	SPRING	NONE
14-Mar-17	1	1045	FP	1	SWL	4	N/A	OFF	3RS ET	22.1827	113.9356	SPRING	NONE
14-Mar-17	2	1214	FP	1	SWL	5	N/A	ON	3RS ET	22.1461	113.9081	SPRING	NONE
20-Mar-17	1	1025	CWD	1	SWL	2	209	ON	3RS ET	22.2001	113.8688	SPRING	GILLNET
20-Mar-17	2	1211	FP	1	SWL	2	100	ON	3RS ET	22.1622	113.8978	SPRING	NONE
20-Mar-17	3	1257	CWD	1	SWL	2	36	ON	3RS ET	22.1846	113.9041	SPRING	NONE
20-Mar-17	4	1432	FP	3	SWL	3	108	ON	3RS ET	22.1470	113.9278	SPRING	NONE
20-Mar-17	5	1439	FP	2	SWL	3	63	ON	3RS ET	22.1472	113.9326	SPRING	NONE
20-Mar-17	6	1457	FP	2	SWL	3	24	ON	3RS ET	22.1816	113.9359	SPRING	NONE
21-Mar-17	1	1025	CWD	4	WL	1	202	ON	3RS ET	22.2603	113.8533	SPRING	PURSE SEINE
21-Mar-17	2	1214	CWD	13	WL	3	397	ON	3RS ET	22.1980	113.8262	SPRING	PURSE SEINE
21-Mar-17	3	1242	CWD	7	WL	2	1163	ON	3RS ET	22.1870	113.8386	SPRING	PURSE SEINE
23-Mar-17	1	1128	CWD	3	NWL	1	123	ON	3RS ET	22.3779	113.8767	SPRING	NONE
23-Mar-17	2	1222	CWD	3	NWL	1	19	ON	3RS ET	22.3733	113.8881	SPRING	NONE

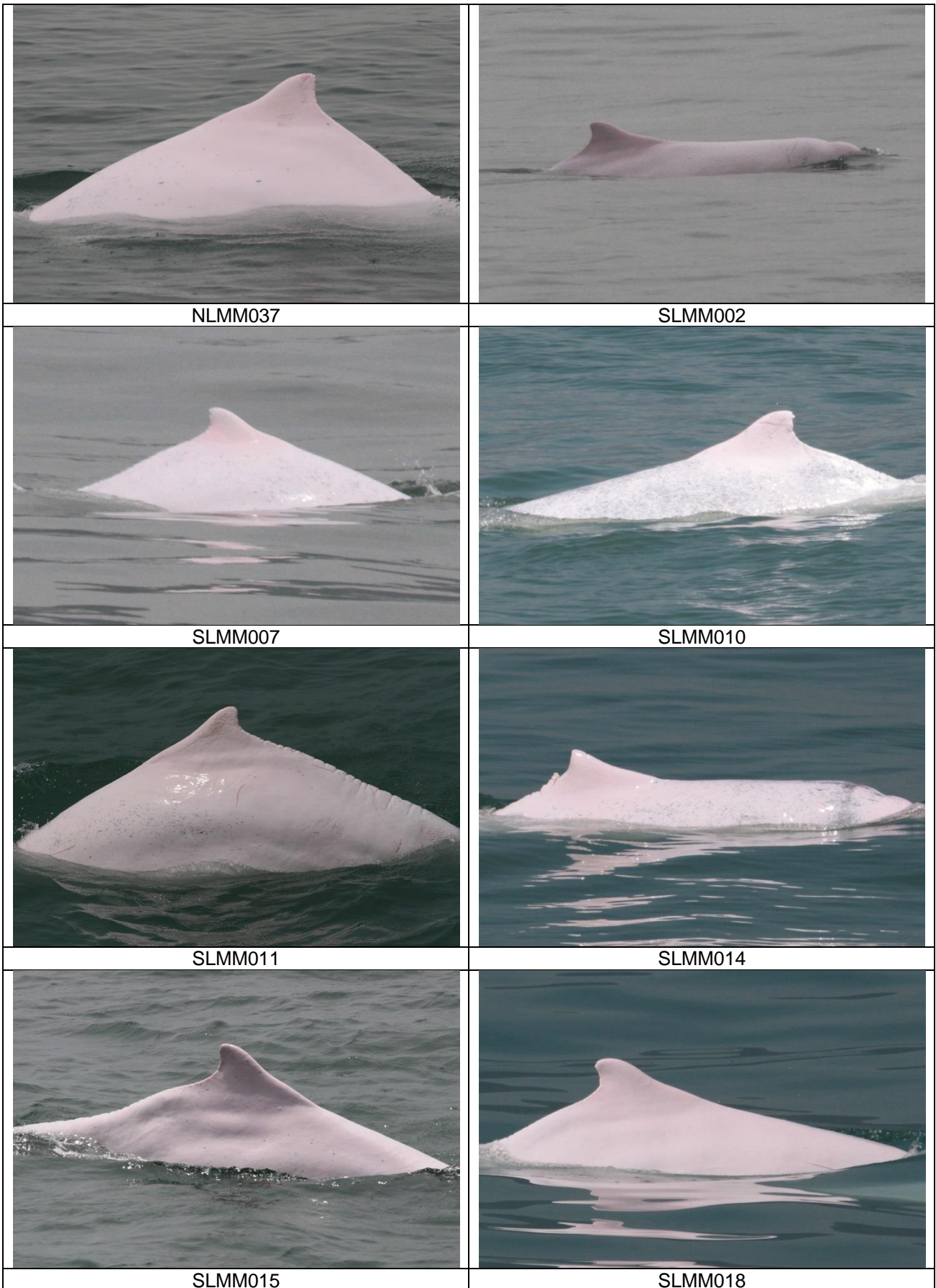
Abbreviations: STG# = Sighting Number; GP SZ = Dolphin Group Size; BEAU = Beaufort Sea State; PSD = Perpendicular Distance (in metres); N/A = Not Applicable; DEC LAT = Latitude (WGS84 in Decimal), DEC LON = Longitude (WGS84 in Decimal); BOAT ASSOC. = Fishing Boat Association

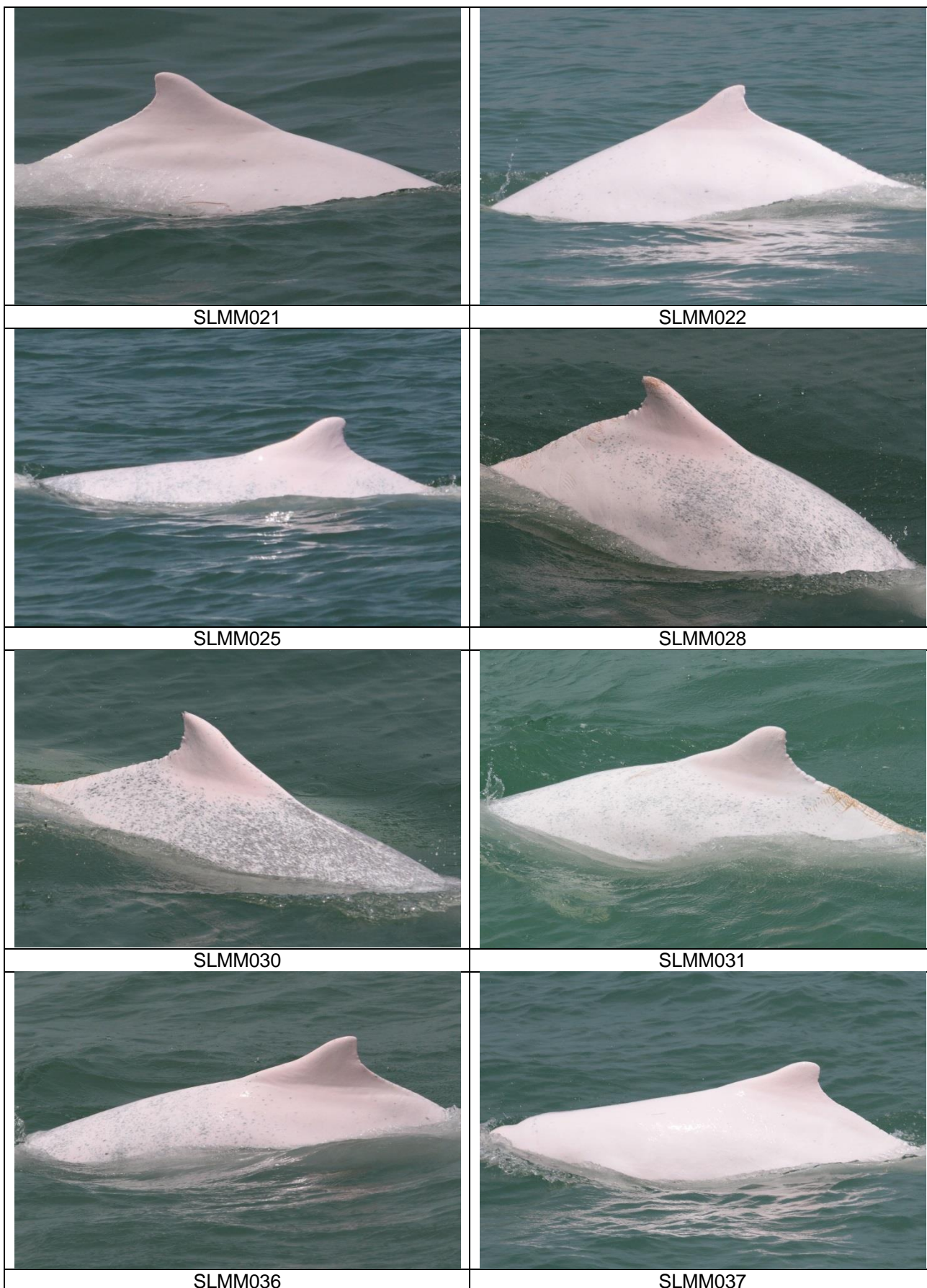
CWD Small Vessel Line-transect Survey

Photo Identification

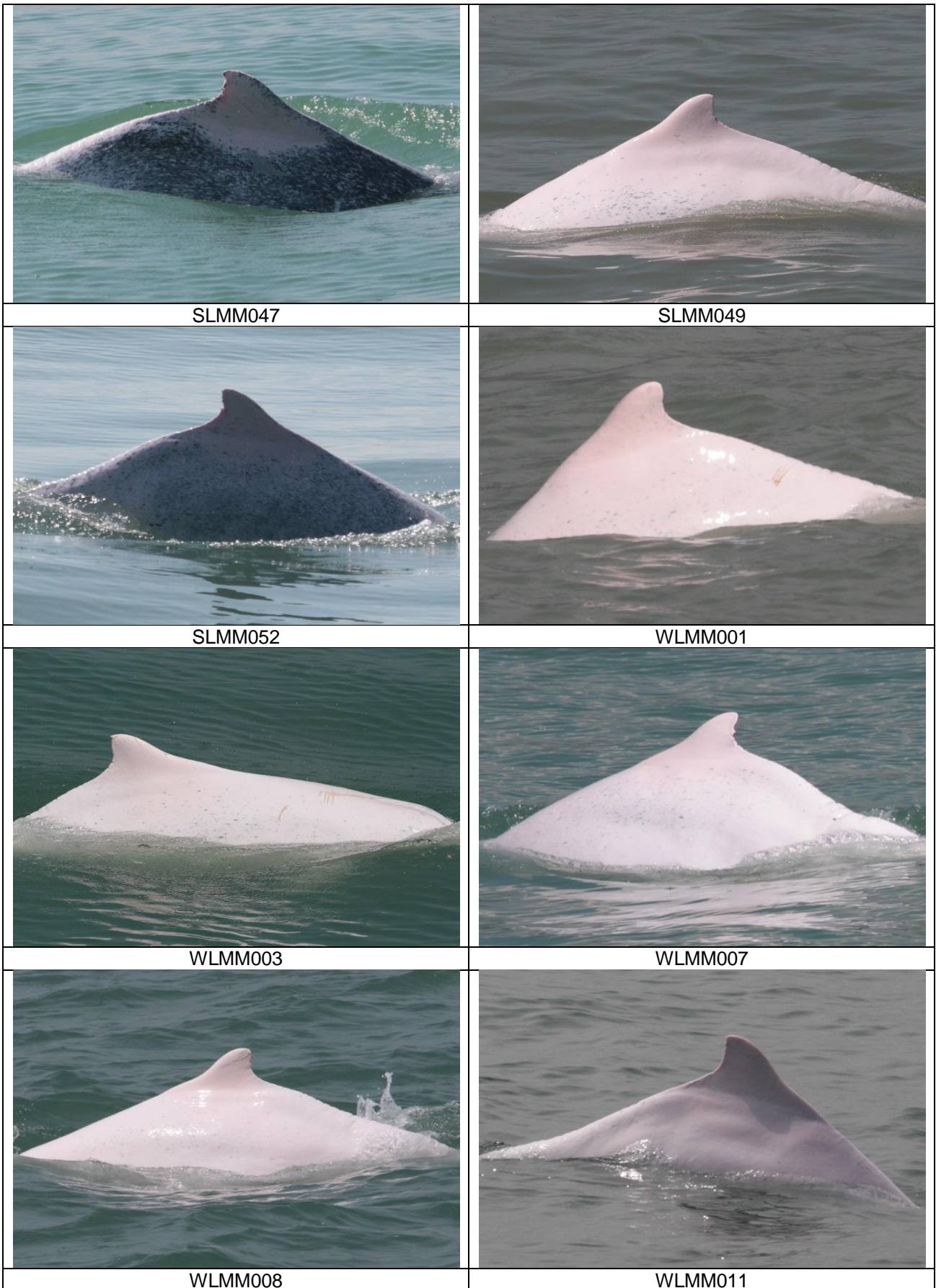
	
NLMM004	NLMM015
	
NLMM016	NLMM017
	
NLMM019	NLMM020

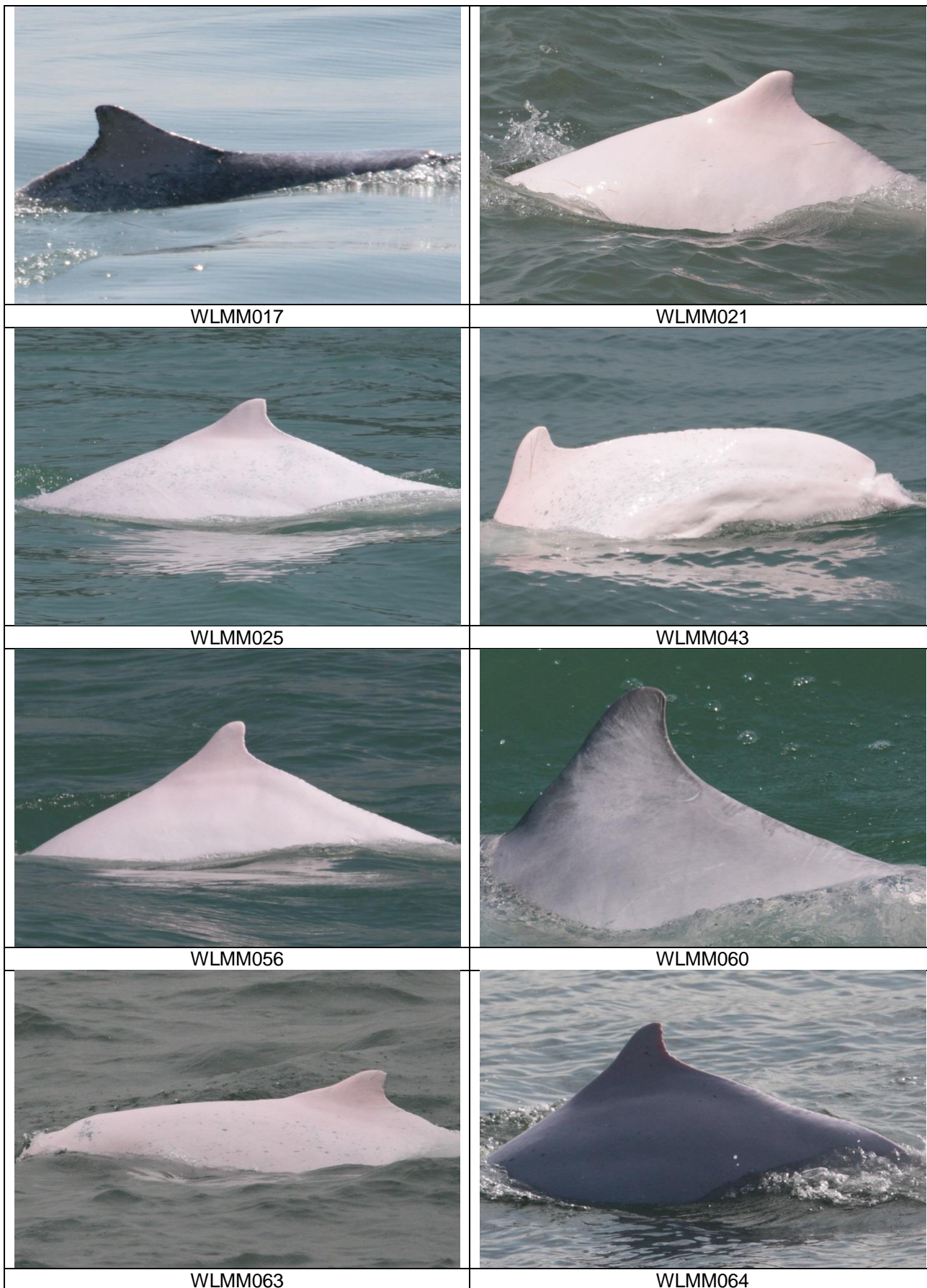




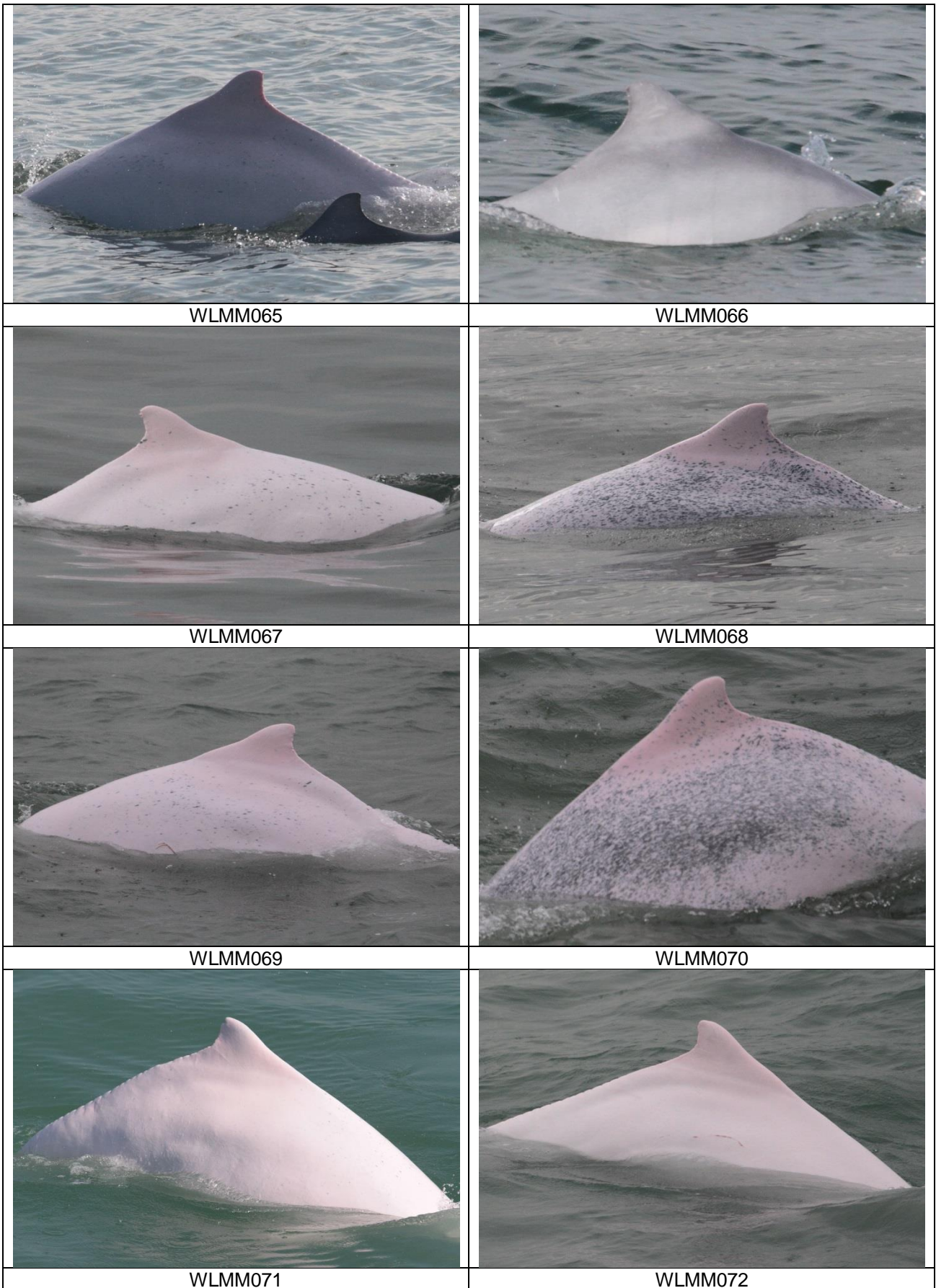














WLMM073



WLMM074

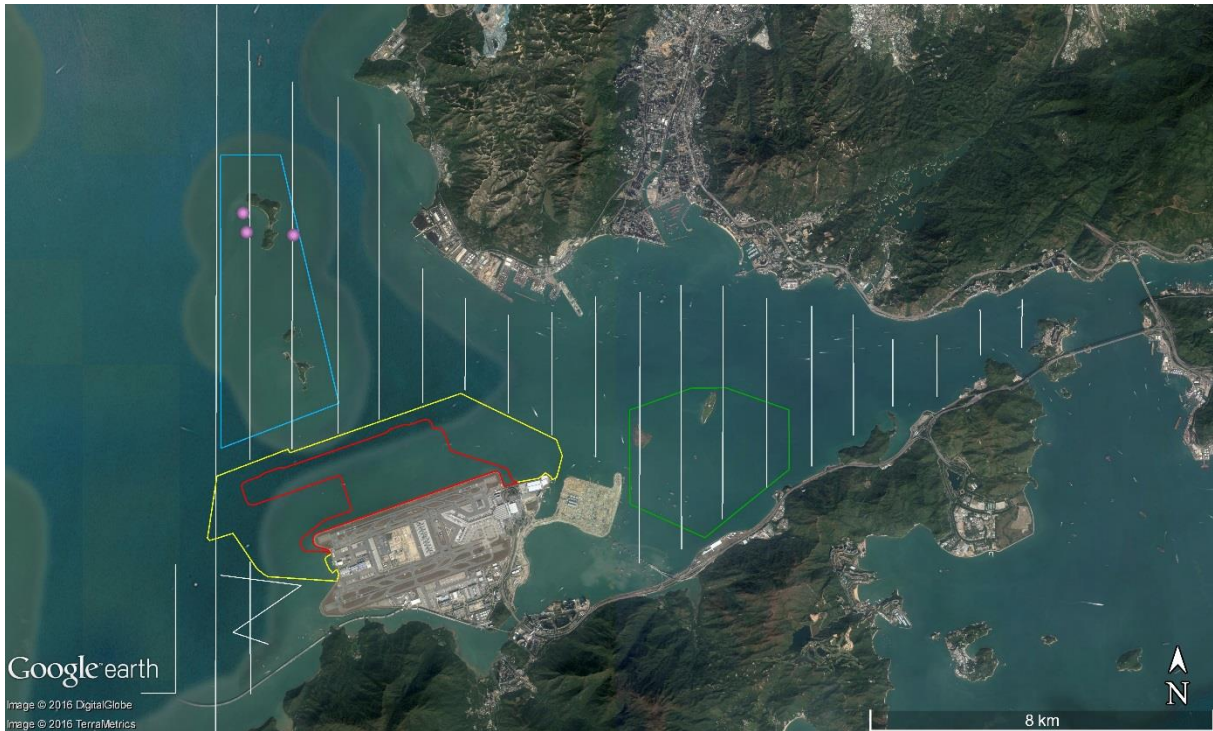


**CWD Small Vessel Line-transect Survey**

**Photo Identification – Re-sighting Locations**

[Pink circle: Sighting locations of individual dolphin, White line: Vessel survey transects, Blue polygon: Sha Chau and Lung Kwu Chau Marine Park (SCLKCMP), Green polygon: Brothers Marine Park (BMP), Red polygon: 3RS land-formation footprint, Yellow line: 3RS temporary works area boundary]

NLMM004

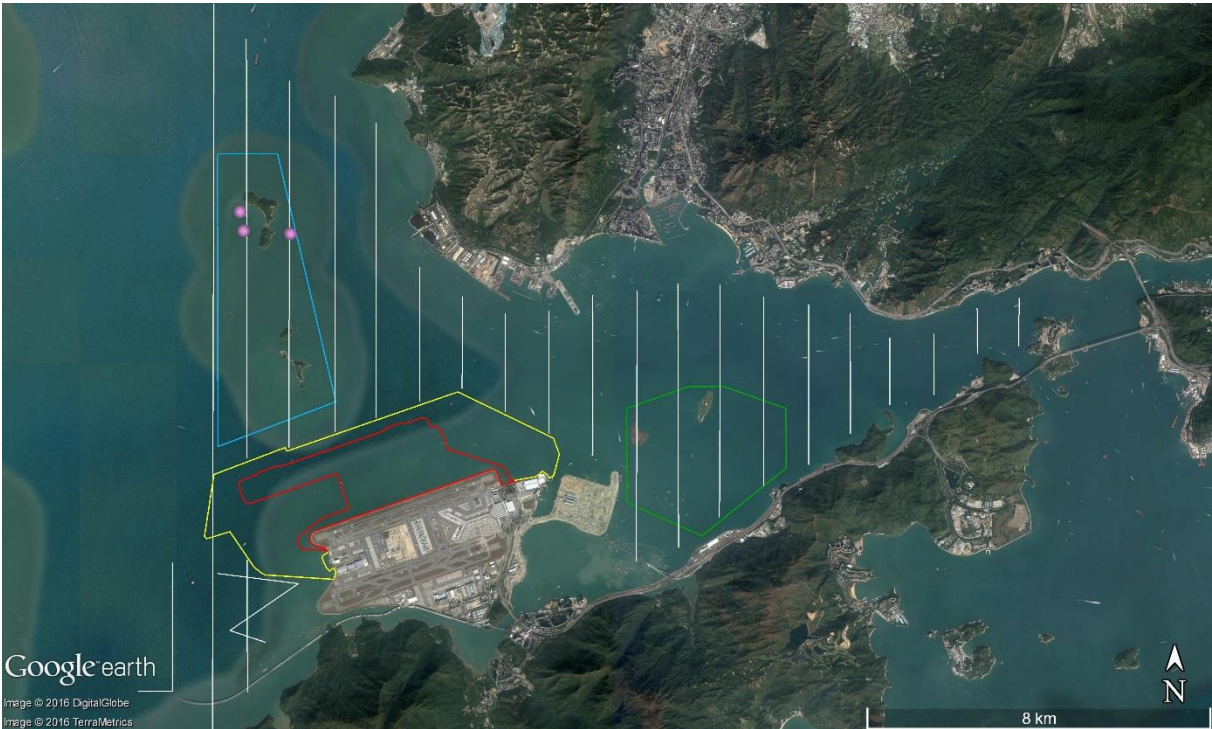


NLMM015

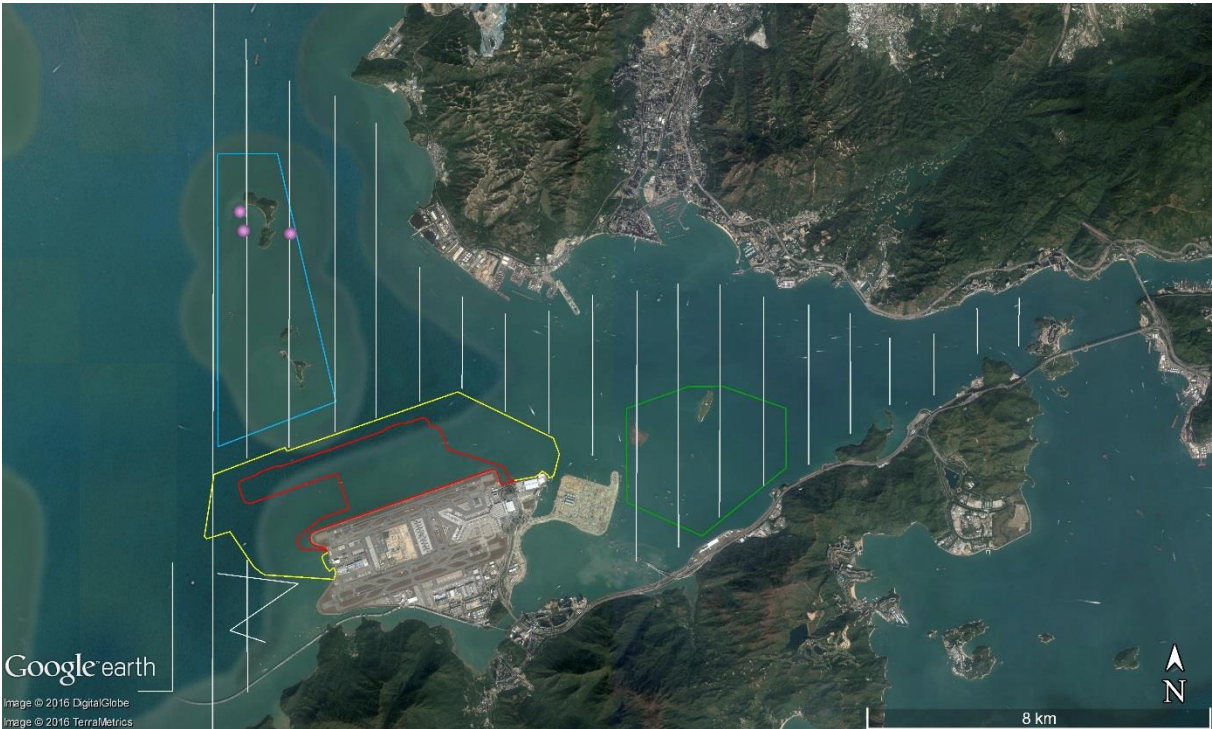




NLMM017



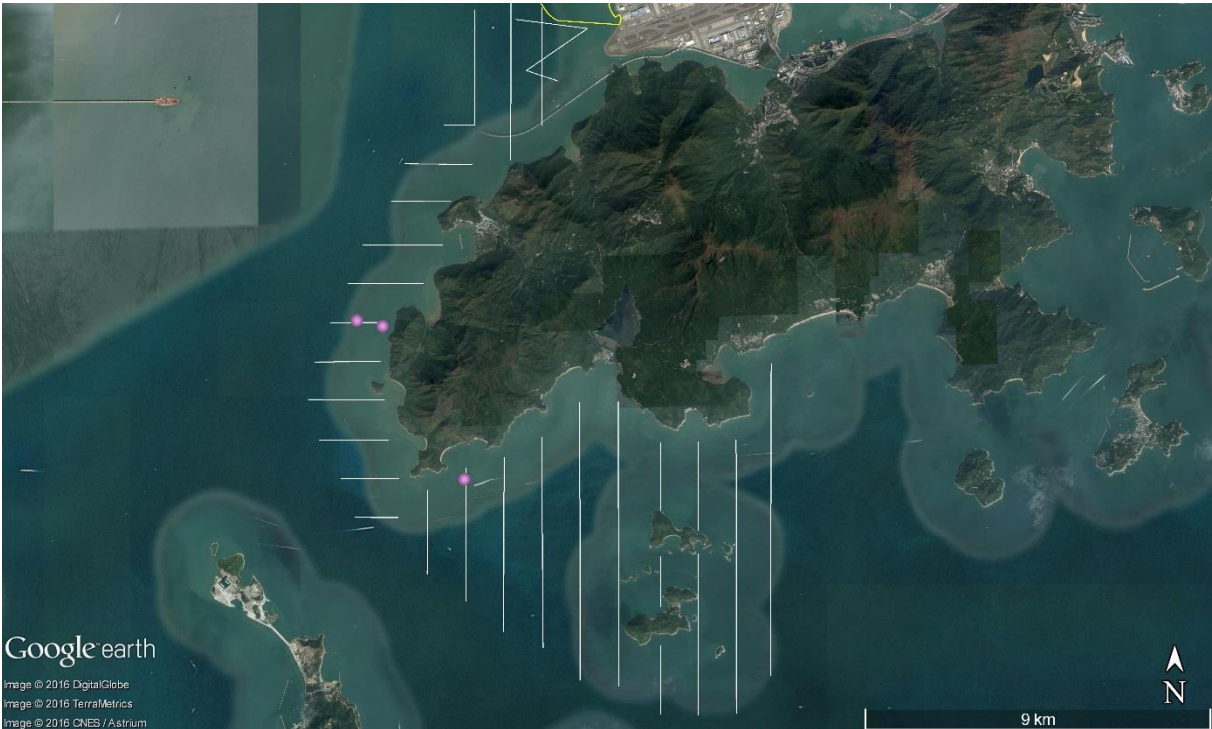
NLMM037



SLMM007



SLMM010

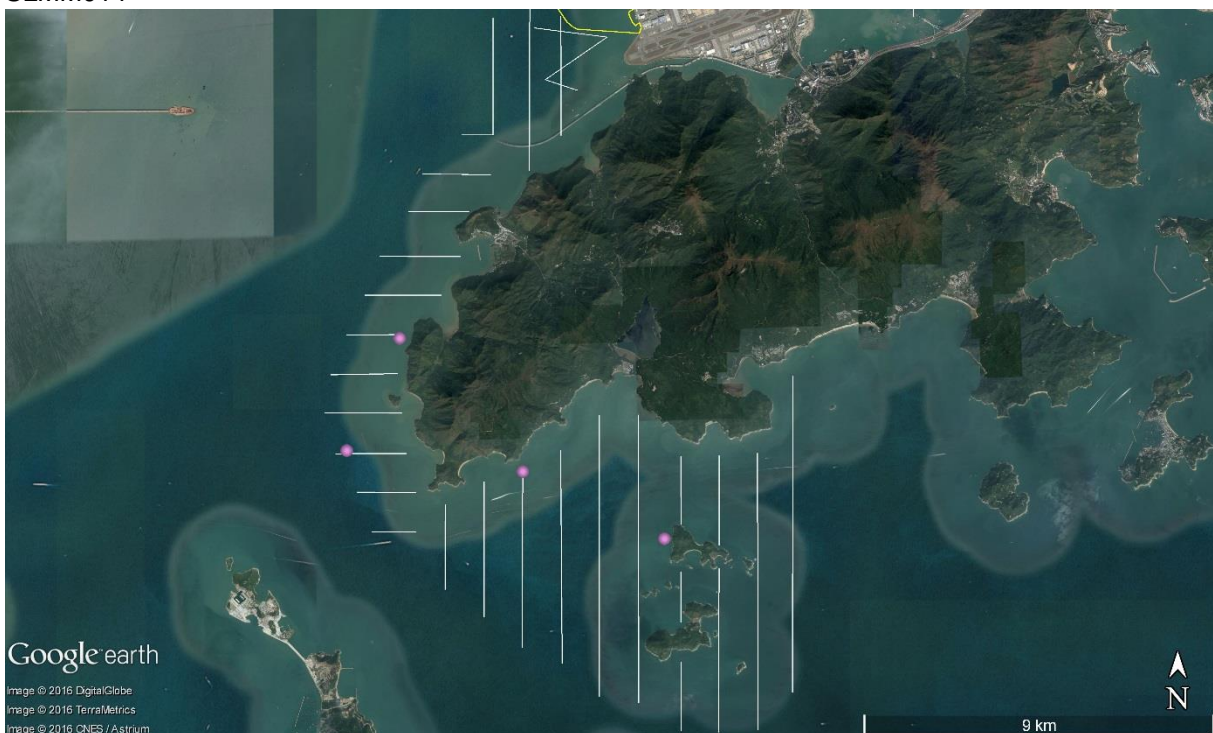




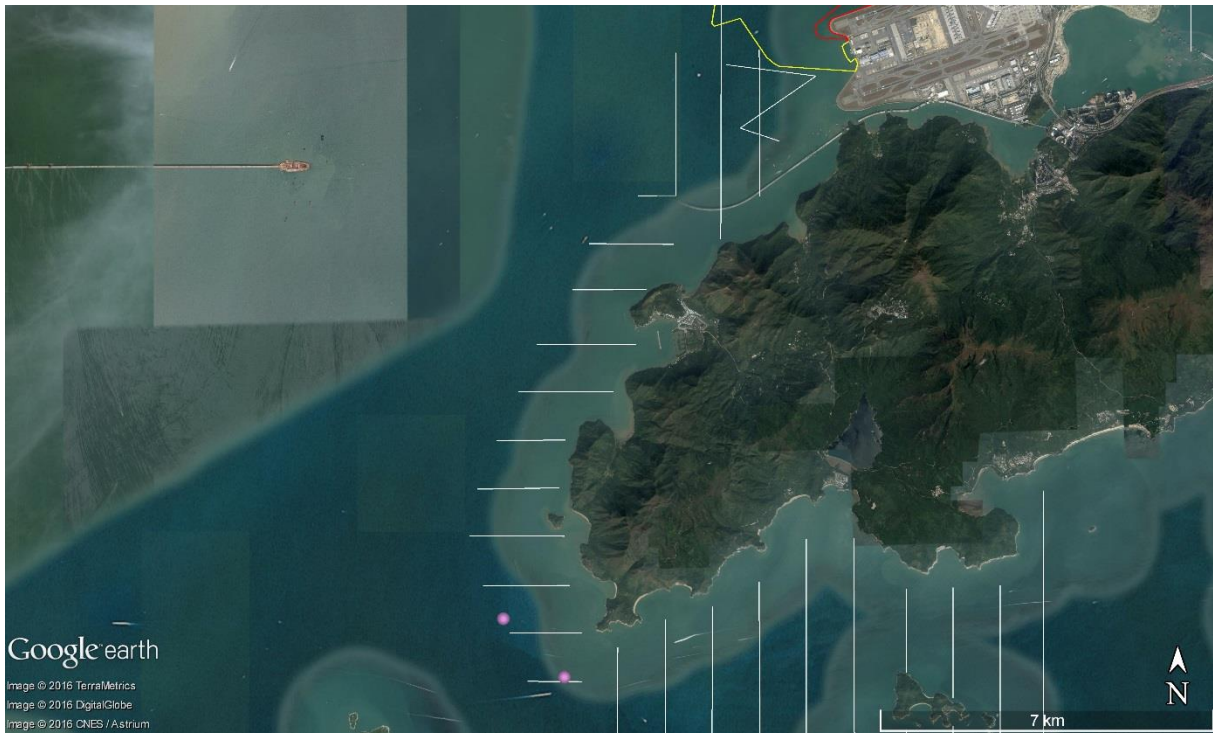
SLMM011



SLMM014



SLMM015



SLMM018





SLMM021



SLMM031

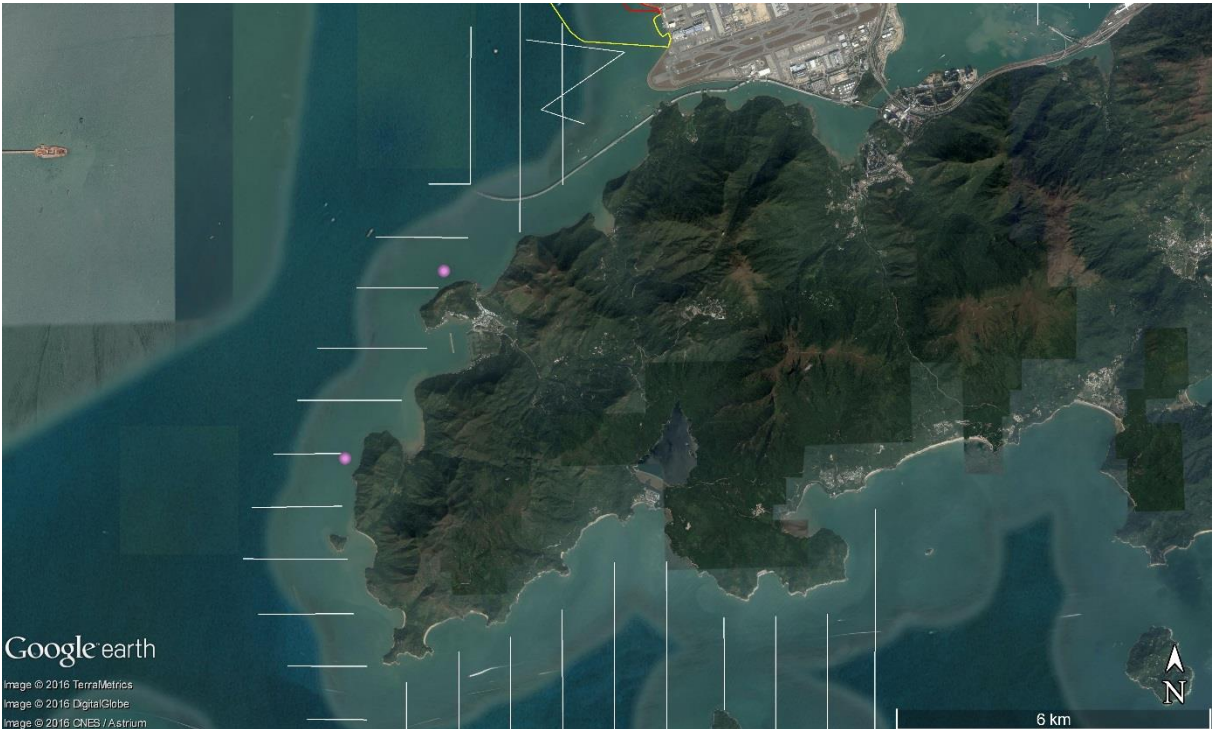




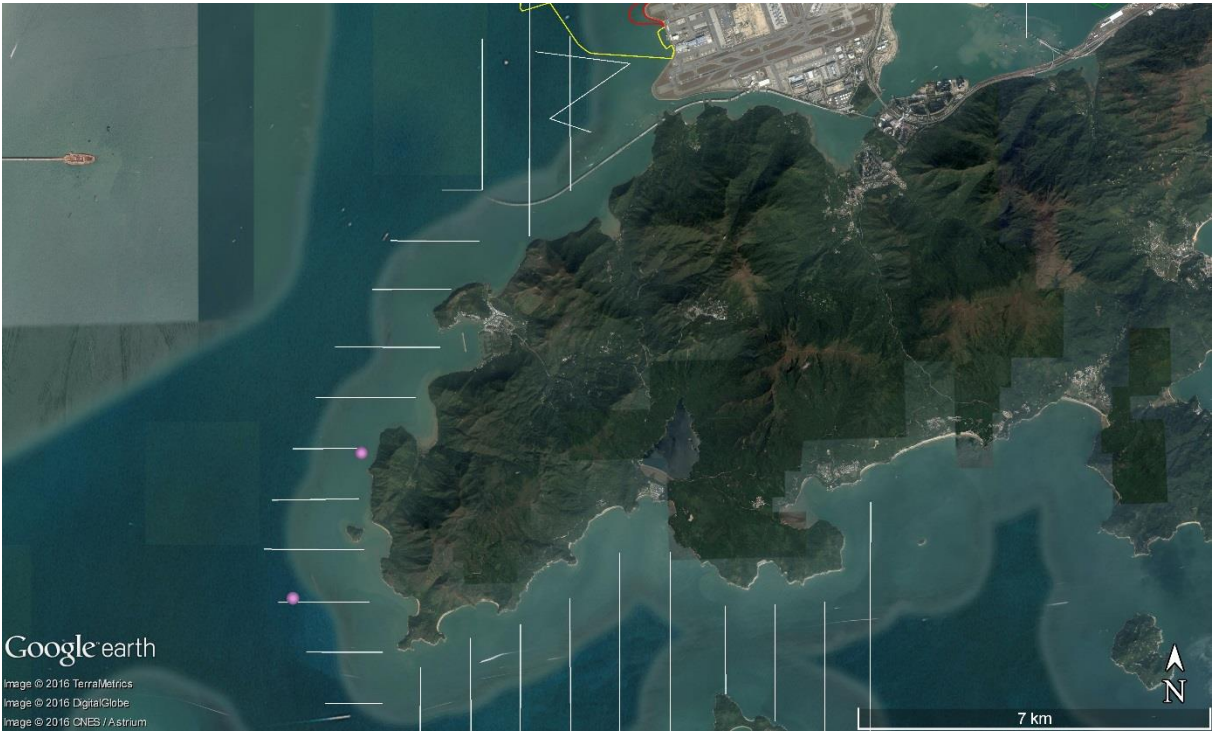
SLMM037



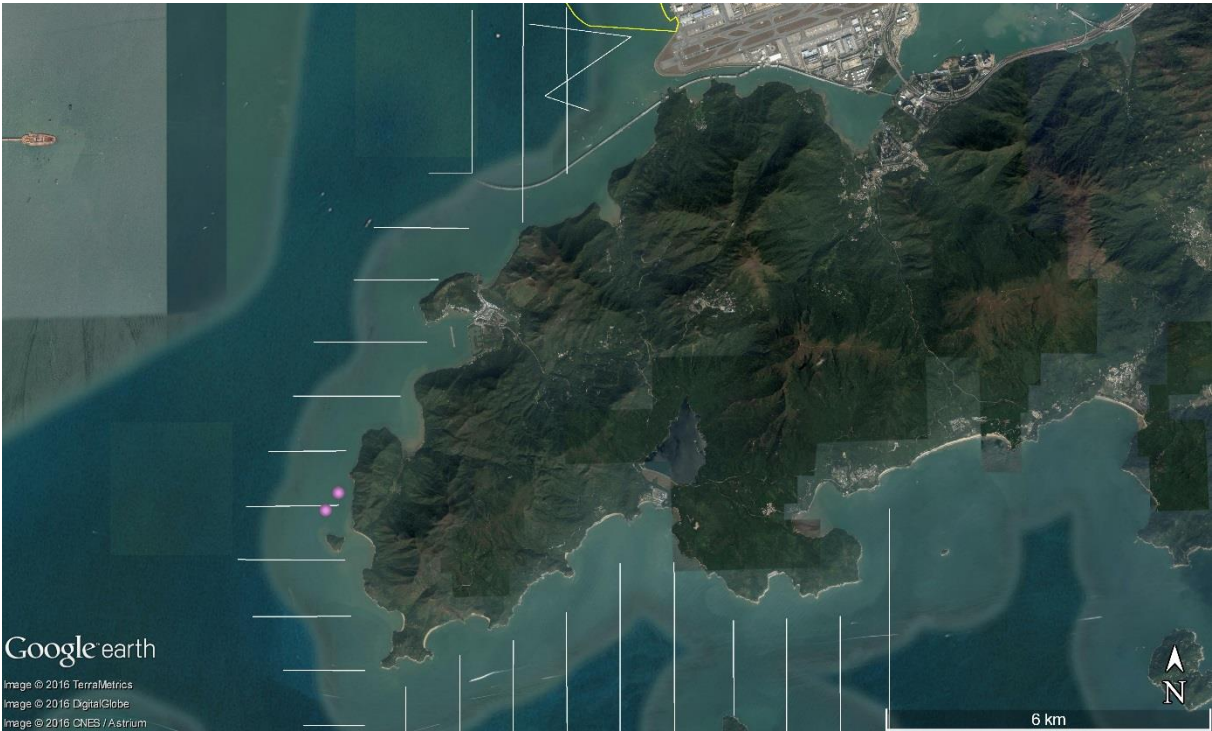
SLMM049



SLMM052

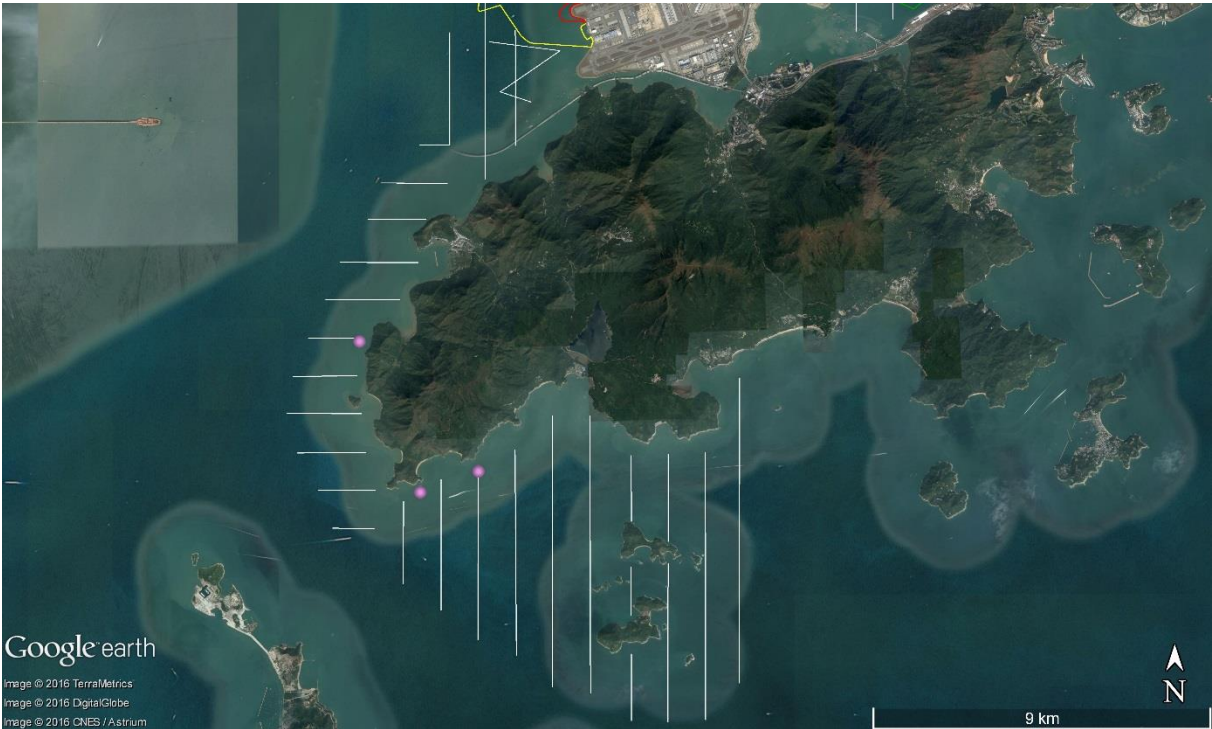


WLMM001

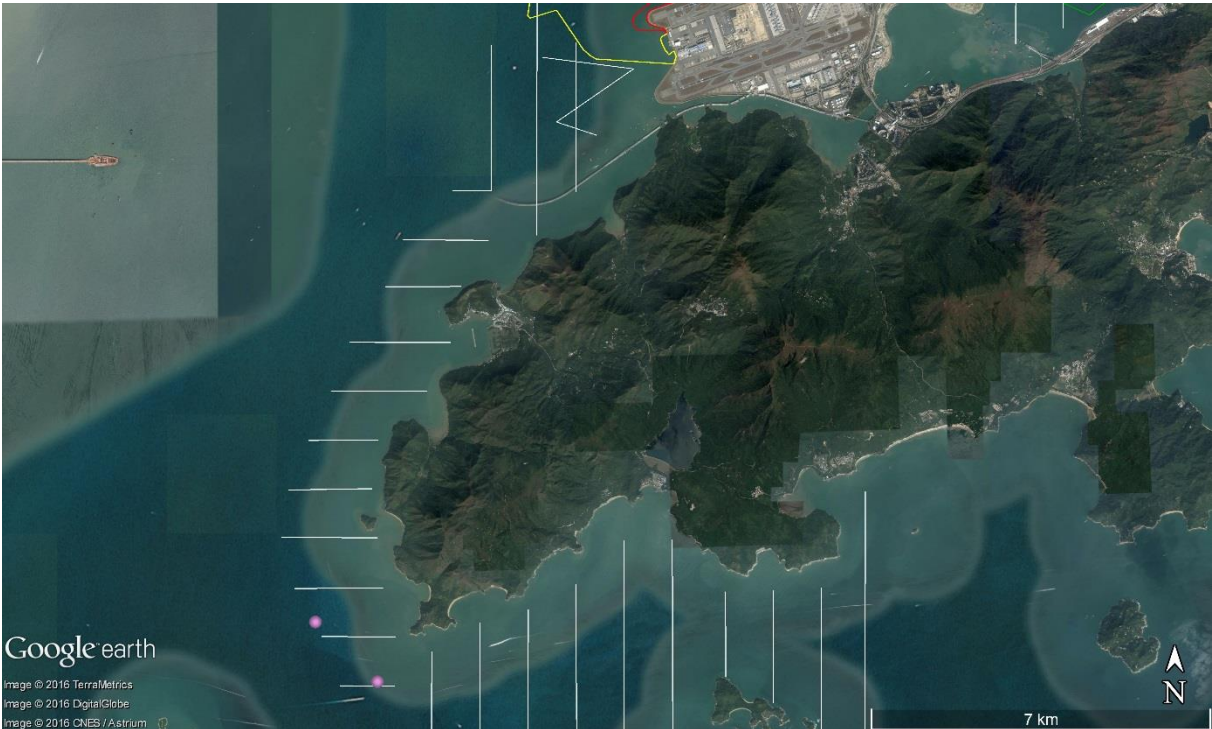




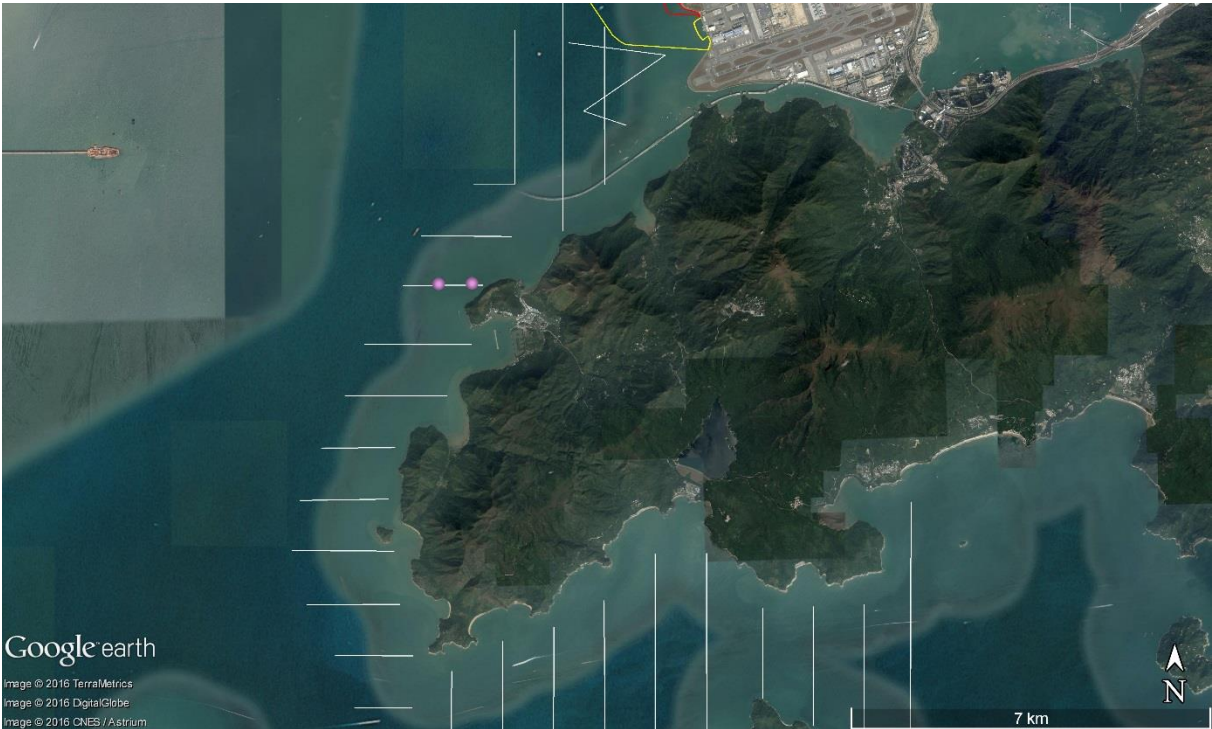
WLMM007



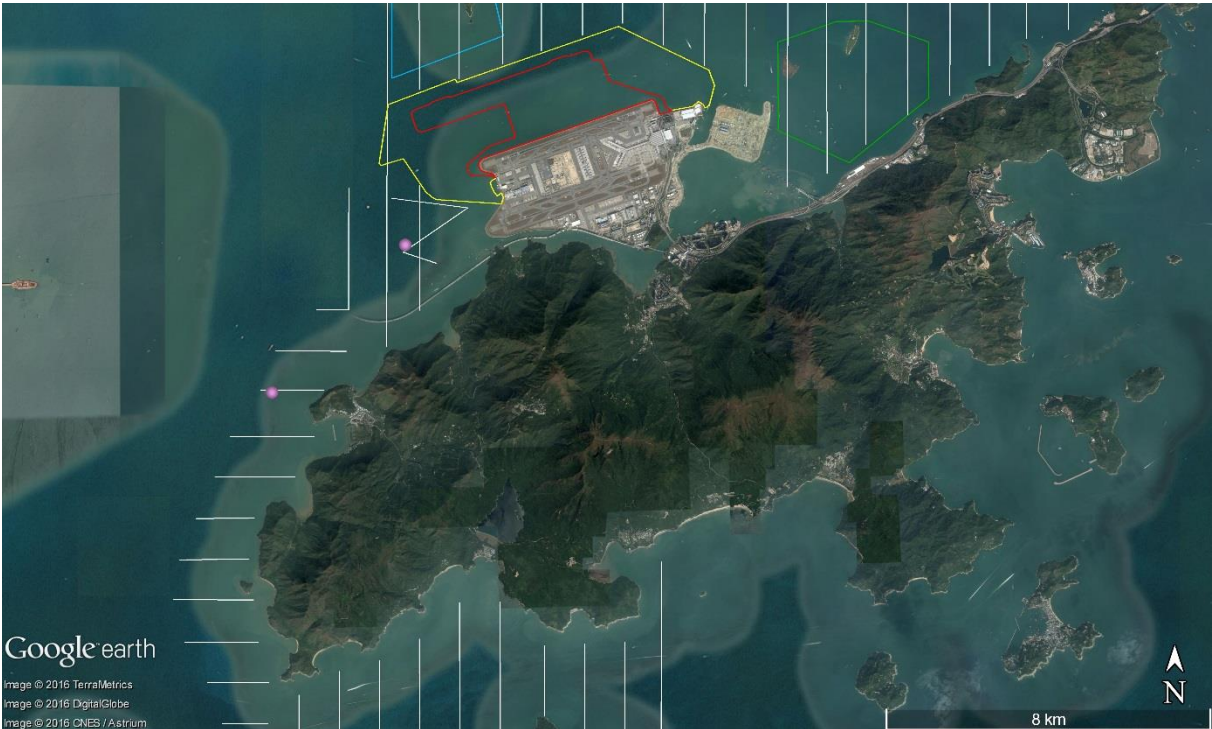
WLMM008



WLMM043

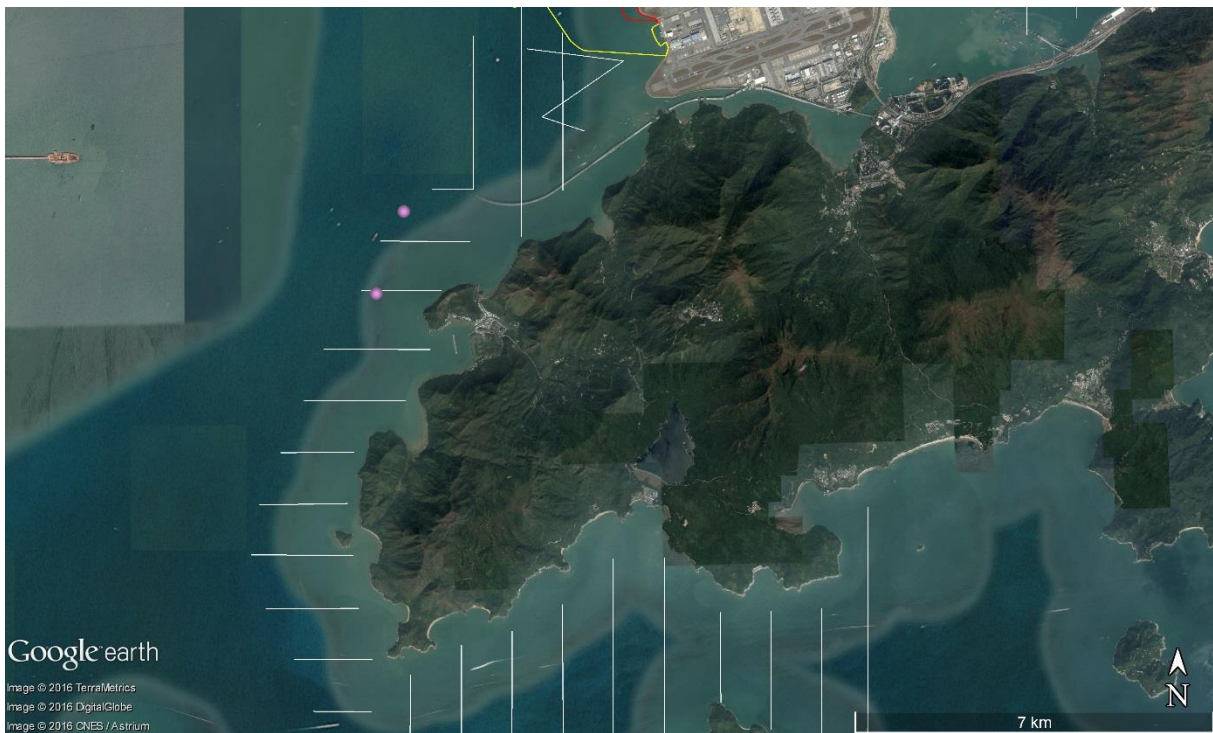


WLMM060





WLMM068



WLMM071





## CWD Land-based Theodolite Tracking

## CWD Groups by Survey Date

Date	Station	Start	End	Duration	Beaufort	Visibility	No. of Focal Follow	Dolphin Group Size
9-Jan-17	Sha Chau	8:40	14:40	6:00	2	3	0	0
18-Jan-17	Lung Kwu Chau	8:40	14:40	6:00	2-3	3-4	3	1-5
20-Jan-17	Sha Chau	8:45	14:45	6:00	3	2	0	0
24-Jan-17	Lung Kwu Chau	8:33	14:33	6:00	2-3	3	1	4
25-Jan-17	Lung Kwu Chau	8:36	14:36	6:00	2-3	3	6	1-3
14-Feb-17	Sha Chau	8:34	14:34	6:00	2-3	1	0	0
15-Feb-17	Lung Kwu Chau	8:38	14:38	6:00	2-3	2	12	1-4
20-Feb-17	Lung Kwu Chau	8:45	14:45	6:00	1	3-4	0	0
27-Feb-17	Sha Chau	8:45	14:45	6:00	2-4	2	0	0
28-Feb-17	Lung Kwu Chau	8:47	15:02	6:15	1-2	2	12	1-7
20-Mar-17	Lung Kwu Chau	8:50	14:50	6:00	2	3	1	2
21-Mar-17	Lung Kwu Chau	8:47	14:47	6:00	2	3	0	N/A
24-Mar-17	Sha Chau	8:48	14:48	6:00	4	2	0	N/A
28-Mar-17	Lung Kwu Chau	8:41	14:41	6:00	2-3	2	5	1-4
29-Mar-17	Sha Chau	8:38	14:38	6:00	2-4	3	0	N/A

Visibility: 1=Excellent, 2=Good, 3=Fair, 4=Poor